

Management and planning for marine and coastal environments



Coastal areas are sensitive, dynamic spaces subject to a wide range of pressures that need to be controlled to allow appropriate planning able to reconcile environmental conservation, the well-being of the population and economic development.



GINGER Environnement & Infrastructures provides concerned clients with coastal and marine environments with its scientific, technical and legal expertise, whether for defining environmental planning and protection strategies or for carrying out actions and developments able to enhance the coastal areas and marine heritage of our shorelines.



KNOW-HOW

• Scientific expertise concerning marine and coastal components

Hydrodynamic and hydrosedimentary, marine and coastal ecology, bacteriological and chemical quality (sediment, living matter and water), diagnostics of planning and facility projects.

• Coastal planning

Environmental diagnosis of the coast and seabed, technical expertise, feasibility study, impact assessment, prescribed report,

designing and construction engineering, client assistance, project management, environmental supervision of works.

• Tourism enhancement of coastal areas

Tourism development strategy, coastal resort classification document, feasibility or environmental study for the location of hotel complexes, impact assessment, regulatory prescriptions, environmental supervision of works.

• Enhancement and protection of the environment

Environmental expertise of natural environments, preparation of a natural spaces management and planning programme, protection and restoration provisions for natural coastal and marine environments.



• Environmental monitoring of the marine environment

- Benthic or pelagic ecological monitoring, followed by physicochemical and bacteriological monitoring,
- Acquisition of in-situ current data and hydrodynamic modelling,



- Cartography of the seabed and coastal areas,
- Detailed information concerning institutional players and legislative and regulatory frameworks,
- Technical expertise in the design, construction or monitoring of coastal and marine works and programmes,
- Client assistance in the fields of environmental management and the design of coastal and marine programmes,
- Project management for coastal and marine programmes.

OUR MISSIONS

• Integrated management of coastal areas

Sea development scheme (SMVM), bay agreements, marine observatories, management plans.

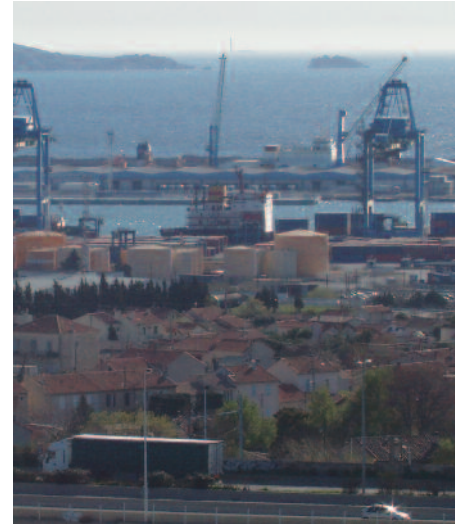
• Beach layout and management of swimming areas

- Study of the stability of beaches and causes of erosion, layout and resanding study,
- Study of sea water quality for bathing purposes,

- Operational management study of swimming areas,
- Plans for the closure and reopening of swimming areas, swimming area vulnerability analysis.

• Port development

Feasibility study, study of the design and sizing of port docks and backup areas, legal and technical studies in view of a public-private partnership, environmental studies, “clean port” diagnosis, layout or redefinition of port areas, treatment of runoff water, sizing and monitoring of dredging operations, landscaping integration.



REFERENCES

Beach management

- Impact of new European regulations on the management of the sanitary quality of the swimming water of beaches along the Marseille coastline, Marseille city authority.
- Definition of beach profiles for the swimming areas on the Etang de Berre, GIPREB.
- Client assistance for drafting specifications aiming to understand and control bacteriological pollution on the Adour river mouth, DDAF des Landes.

Port development

- Technical and landscaping studies for the redefinition of the port area in the commune of Rivedoux-plage, Commune de Rivedoux-plage.
- Feasibility study for the extension of the marina in Cavalaire-sur-Mer, Ville de Cavalaire-sur-Mer.
- Diagnostic study of the environmental situation and levels of solid and liquid pollution in the Port de Saint-Jean Cap Ferrat, SA Port de Saint-Jean Cap Ferrat.
- Technical, legal and financial studies and preliminary evaluation report for a future Public Private Partnership (PPP) layout project for the Port de Le Barcarès, Ville de La Barcarès.
- Monitoring of environmental effects of dredging operations and the construction of wharfs within the scope of the FOS 2XL project, Port Autonome de Marseille.

Coastal development

- Hydrosedimentary and use studies of the Moulleau / Péreire coastline in Arcachon, SIBA.
- Technical dimensioning of an anchorage area for the Anse de Corton, Ville de Cassis.
- Project management for the backfilling of the Anse de Ferrières in Martigues, Ville de Martigues.
- Impact assessment of coastal developments, Presqu'île des Capellans subdivision development, Saint Cyprien, LODEF.
- Environmental monitoring of works for the launching slip for Port de Pointe Rouge - Marseille, TP Spada.

Tourism enhancement

- Redevelopment and protection of the Club Med Djerba la Douce hotel complex in Djerba (Tunisia), Club Méditerranée.
- Environmental assessment prior to the construction of the Côte d'Or hotel project - Praslin Island (Seychelles), Beachcomber Group.
- Study for the artificial lagoon and coastal developments for the “Ritz Carlton” hotel project, Les Salines à Rivière Noire (Mauritius), Vinci Constructions Grand Projets.

Environmental enhancement

- Preparation of management and development plans for the Iles de la Madeleine National Park and the Langue de Barbarie National Park (Senegal), Ministry of the Environment and Nature Conservation.
- Initiative for the protection and management of coral reefs in the South Pacific: restoration of reefs and environmental development (Fiji, Samoa, New Caledonia), Agence Française de Développement.



ATT - CAREX Environnement - CONCERTO - SIEE - SPI INFRA - CIE - PARERA - SOPRONER - STRATEGIS
are GINGER Environnement & Infrastructures trade names or subsidiaries

For further information or to contact us, visit our site: www.gingergroupe.com, “LE RESEAU” heading

