

Urban and rural planning



Planning, a term that implies far more than just roads and networks, significantly contributes to quality of living and lifestyles of our fellow citizens. This responsibility is shared by all decision makers involved in the planning sector, should they be elected representatives, developers, architects, town planners or engineers.



Urban and rural planning has multiple fields of application: development of new residential districts and trading estates, redefinition of districts and downgraded sites, creation or highlighting of public areas, collective amenities, sports facilities, tourism, cultural and economic features.

KNOW-HOW

GINGER Environnement & Infrastructures assists clients, elected representatives, local authorities and public and private developers in all stages of their projects, from initial study, through the definition of programs and feasibility studies, to the completion of projects and long-term follow-up. Irrespective of the scope of the project, the future user is central to our thinking.

Our teams of engineers, architects and landscape designers constantly work towards assuring the aesthetic and functional qualities of projects, their long-term potential and full optimisation in view of current and future requirements. Consultation, transmission of information and communication are also key elements in the advice and assistance provided to clients.

GINGER Environnement & Infrastructures can also integrate its teams in studies and

the management of complex operations combining planning, infrastructures and the construction of buildings.

OUR MISSIONS

• Initial studies and expertise

Reports concerning the initial situation and diagnosis of technical and urban considerations: socio-economics, environment, habitat / amenities, networks, travel modes, downgraded sites...

• Planning

- Environmental and socio-economical impact assessments of planning projects,
- Multi-criteria evaluation, technical-economic evaluation,
- Participation in the production of planning documents: SCOT (territorial cohesion plan), urban roads file, urban travel plan, P.L.U (local urban development plans), risk prevention plan,
- Regulatory files and client assistance,

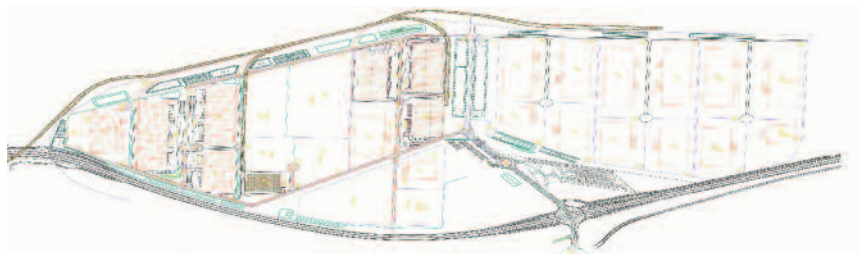
- Urban Approach to Town planning (AEU) and Management and Sustainable Development Plan (PADD).

• Design and execution engineering

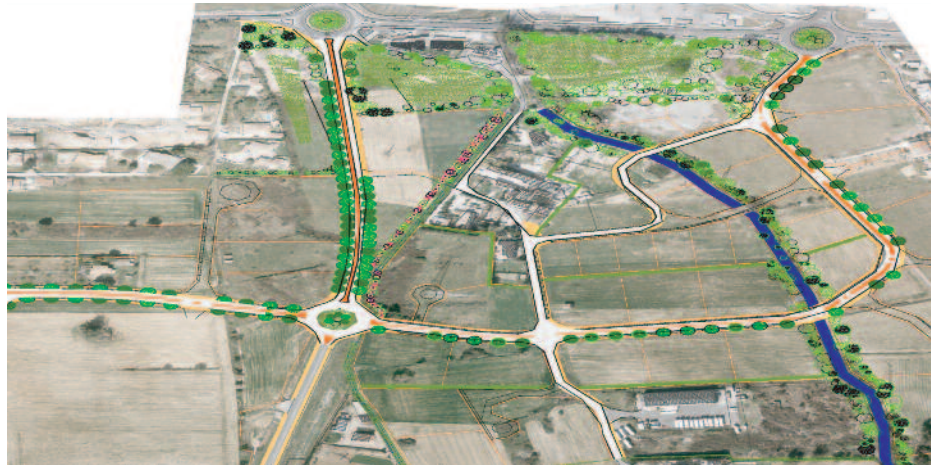
Project management mission (M.O.P law - law on private project management) or project management assistance, during design phases (preliminary design, project, assistance in drawing up works contracts) and works phases (works contracting performance supervision, works drawings, assistance in handover operations), for all trades: roads, public areas and green areas, sports and leisure facilities, water treatment and networks, one-off works (engineering structures) and linear works, public transport infrastructures.

• Client assistance

- Client assistance for the definition of requirements, investment programming and the finalising of development programmes,



- Creation-production file for planning zones & subdivisions,
- Real estate analysis,
- Introduction of consultation, information and decision-support tools,
- Programming, planning and coordination missions to assist the client during large-scale renovation/restructuring operations for downgraded districts or sites,
- Geographical information systems and development of data bases.



REFERENCES

Urban planning: Jarre designated development area (500 housing units) - Capalette designated development area (30 ha, Marseille-Planning) - Trigrance designated development area (20 ha, Istres) - Saint-Charles station designated development area (Marseille, Etablissement Public Euro-méditerranéenne) - Sextius-Mirabeau operation (Aix-en-Provence).

District restructuring, urban renovation operations: Bellevue district - Plan d'Aou - Saint Just - Frais Vallon in Marseille - Indes district in Sartrouville - Val Fourré in Mantes la Jolie - Boudèmes district in Martigues - Berthe district in Seye-sur-Mer - Saint-Augustin district in Nice - La Savine district in Marseille - Redefinition of the unauthorised Ranquet housing estates in Istres.

Trading estates: Logistical platform in Grans-Miramas, Bouches-du-Rhône, 220 ha - Trading estates in Milles (Aix) - Les Estroublans (Vitrolles) - Saumaty-Seon (free zone, Marseille) - Jean-de-Bouc (Gardanne) - Le Tubé (Istres) - Lunel - Saint André designated development area: Grand Littoral shopping mall (Marseille).

Parks, green areas, and leisure facilities: Parc de Malbosc (45 ha, Montpellier) - Vannades lake and leisure facilities in Manosque - Renovation of Rouet beach and backbeach in Carry-le-Rouet - Cavillon-Apt cycleway (25 km) - Hotel Intercontinental in Bora-Bora.

Public areas: Place de l'Espérance and Espace Mistral in L'Estaque (Marseille) - Layout works in Salon-de-Provence - Cours Voltaire and Foch in Aubagne.

Urban infrastructures and networks: 1st section of the South Urban Boulevard (Marseille), L2 ring road (Marseille) - Initial study and project management for the renovation of the entire drinking water network for Oran - Roads and networks for the Saint Charles designated development area (Marseille) - Euroméditerranée project - L2 production drawings, Frais Vallon zone (Marseille ring road).

Public transport: Montpellier tramway (line 1), networks section, roads, assistance with planting, resizing of junctions - Nice tramway (line 1), networks relocation studies - Re-organisation of public transport lines around the perimeter of the Major Urban Project, Marseille - Listing and diagnosis of stops on the urban public utilities network for the Alpes-Maritimes Conseil Général (Regional council) - Clermont-Ferrand tramway, line 1 extension study (Syndicat Mixte des Transports en Commun).

Travel movements: Urban travel plans for Toulon, Aix-en-Provence & Nîmes, urban roadways dossier for the Golfe de St Tropez - Multimodal exchange hubs in Vitrolles, Aix & Toulon - Multi-year transport and traffic study contracts for the Bouches-du-Rhône Conseil Général and the Vaucluse Conseil Général - Traffic impact of Auchan shopping centres (Marseille, Aubagne, Perols, La Trinité, Montpellier) - East-West link (LEO) and Courtine station designated development area in Avignon.



ATT - CAREX Environnement - CONCERTO - SIEE - SPI INFRA - CIE - PARERA - SOPRONER - STRATEGIS
are GINGER Environnement & Infrastructures trade names or subsidiaries

For further information or to contact us, visit our site: www.gingergroupe.com, "LE RESEAU" heading

